

Welcome

Welcome,
The Winter Olympic Games starts this week at our neighbor north of the border and infrared thermography is playing a part. Our lead story this month illustrates how thermography can provide an edge to the teams using the technology.

We also have a video from our own Rusty Bushee on using thermography for mechanical equipment condition monitoring.

Last month we launched our first series of webinars which were a great success. For those of you who missed it, you can enroll to see the webinars in their entirety at www.irtraining.com.

As usual we have our Message Board posts, News items, Videos, and our monthly Brainteaser for you to solve.

Enjoy the Winter Games!,

Gary Orlove,
Editor and Publisher



Links of Interest

[Infrared Training Center](#)

[ITC On-Demand Training Portal](#)

[Course Calendars](#)

[ITC Web Store](#)

[InfraMation IR Conference](#)

[IR InformIR Blog](#)

InfraMation 2010 – Call for Papers

It's that time of year again when you can start thinking about what you might like to share with your colleagues in the infrared thermography community, and earn valuable certification renewal points. The conference will be held November 8-12, 2010 in Las Vegas. To submit an abstract visit the link below:

[Abstract Submittal Link](#)

InfraMation

Physics of Curling for the Olympics

A researcher studying the science of curling for Canada's Olympic team has found that sweeping doesn't melt the pebbly ice as many believe, but softens it and subtly changes its physical characteristics.



"What we discovered is that it never melts. It only slightly warms up due to the friction of the sweeping," said Tom Jenkyn of the University of Western Ontario.

[Read the entire story](#)

Video of the Month

ITC's Rusty Bushee talks about using an Infrared Camera in Mechanical Applications. Click the image to see the video.





IR News you can Use

Straight from the World Wide Web, here is what's going on in the world of infrared thermography.

[Equine Thermography - A tail of two horses' courses](#)

I am often asked the question, "I am interested in equine thermography. Where can I get training?" We at the Infrared Training Center, do not offer an equine course. I used to recommend one training organization but now, I can recommend two. Which one you choose depends on what you want to do with your equine thermography practice. I will review the Vetel Diagnostics training and the new EquineIR training.

[BMW Planning New Eco-Conscious 7 Series Diesel and Hybrid Models](#)

Palm Beach Daily News - Peter W. Frey - Feb 4, 2010
... and an optional Night Vision system with an infrared camera that can tell you if a pedestrian is about to cross the street in front of you. ...



[Thermal imaging cameras: a cost effective solution for perimeter protection](#)

SourceSecurity.com- Feb 4, 2010
A new tool for seeing in total darkness, in the most adverse weather conditions is thermal imaging, which is the use of a thermal imaging camera to "see" ...

[Going thermal](#)

SecurityInfoWatch - Randall R. Nason - Jan 21, 2010
Thermal imaging cameras are primarily used in applications where detection, not identification, of an intruder is the goal.



Notice how difficult it is to ..

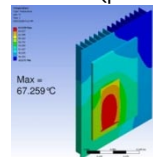
[Thermal Imaging Diagnoses Seed Quality](#)

Laboratory Equipment - Jessie Hirsch - Feb 2, 2010
Scientists at Kew's Millennium Seed Bank in the UK and the Univ. of Graz, Austria, have developed a rapid, new method to diagnose seed quality ...



[Thermal Analysis Research Project, Rugged Computer](#)

PR Web (press release) - Jan 25, 2010
Blake Allen, Small PC's president said "The heat signature images provided by the Flir Thermal Imaging Camera were significant in pointing us in the right ..



ITC Message Board Posts

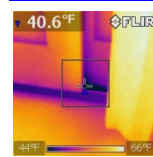
Here is a selection of recent new threads by ITC Community members. Feel free to click the links, see the responses, and post your own response if you like.

[Explanation of heat around perimeter on the floor...?](#)



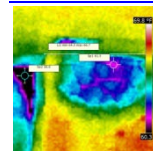
Can anyone help me explain the reason for the heat on the ground around the perimeter of this building? I understand it isn't a problem, but I need to explain the cause.

[Window & Door Seal Question](#)



I'm new to infrared thermography and have done a half a dozen inspections. I'm seeing a pattern that each of my inspections show that the windows and doors are leaking air - especially in the corners. All the houses I've scanned are less than 10 years old and the Windows are high quality Andersen windows. Please look at this image and let me know how you would diagnose ... I'm starting to think that I'm missing something here and all these windows/doors can't be leaking??

[Hearthstone fireplace water infiltration?](#)



I'm new to the field of building thermography and can recognize various patterns, but I came across an anomaly while scanning a hearthstone fireplace in a residence that was built in 2003 and not exactly sure what it is. In the attached scan, Li1 is the line where the fireplace meets the ceiling. Sp2 is where the fireplace meets the side wall and missing insulation is apparent.

[What type of insurance can I go under for protection](#)

Anyone have a copy of a pre-inspection agreement and what type of insurance is needed to run under.

[Help analyzing image of discrepancies in the brickwork...](#)



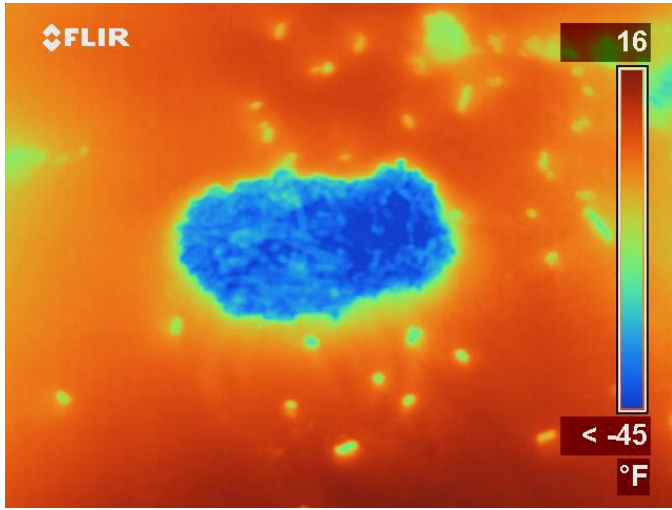
I recently surveyed this building and noticed the temperature differences of some of the bricks, usually I would suggest missing/insufficient insulation when there are larger patches of warmth on the brickwork. However, in this image the warmer bricks are too small and detailed (you can almost count the number of bricks that are warmer). Looking at the digital image, there is no difference in the surface finish of the warmer areas of brickwork either.

Can anyone suggest a possible cause for these thermal anomalies?

And of course if **YOU** have a question or want to start a discussion on a topic, we would love to hear from you. Just post a new thread on a [message board](#).

QUIZ! ? Brainteaser of the Month

Here is this month's brainteaser. Readers who e-mail us a correct explanation are entered into a drawing to win a prize. Please put "Brainteaser" as the subject of the message.



Click [here](#) to e-mail your guess

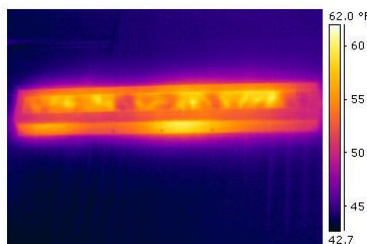
Do you have an interesting image that you think would challenge other thermographers? If so please [email](#) me your image (preferably in native .img, .jpg, .tif, .tgw, or .tmw format) with an accompanying visible photo and explanation. If your image is used, you receive a gift as well.

🧠 Last Month's Brainteaser

This is an image of the info display on the wall, on the production floor of Barber Foods. Ambient temp is approx 40 deg F.

We received a total of 110 guesses last month and only one correct guess!

Congratulations to our winner David Herring, and to our thermogram contributor, Marty



Tauber from Barber Foods. They both win the revered ITC low e coffee mug.

🔨 The Fine Print

THIS DOCUMENT IS FOR INFORMATIONAL PURPOSES ONLY. INFORMATION PROVIDED IN THIS DOCUMENT IS PROVIDED 'AS IS' WITHOUT WARRANTY OF ANY KIND.

The user assumes the entire risk as to the accuracy and the use of this document. The Infrared Training Center newsletter may be copied and distributed subject to the following conditions:

1. All text and images must be copied without modification and all pages must be included;
2. All copies must contain the Infrared Training Center copyright notice and any other notices provided therein.
3. This document may not be distributed for profit.

©2010 Infrared Training Center - All rights reserved